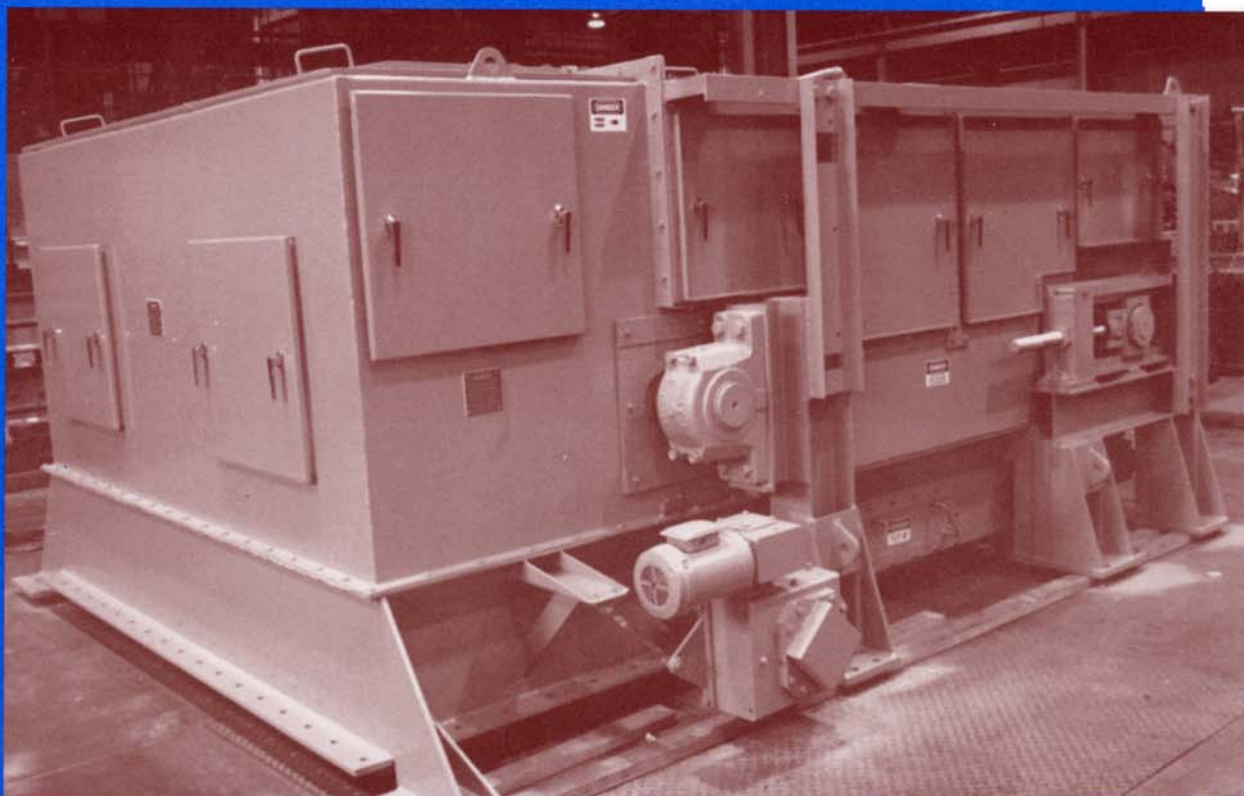


STOCK HIGH CAPACITY HEAVY BELT FEEDER



As part of the continuing expansion of capability in the material handling and accountability areas, Stock Equipment Company can now offer a uniquely designed, large capacity belt feeder for use in material handling yards, shipping terminals, and outside facilities of all kinds.

Representing a departure from the boiler house pressurized feeders for which Stock® is known, the new line of feeders utilizes conveying technology used for years in material handling.

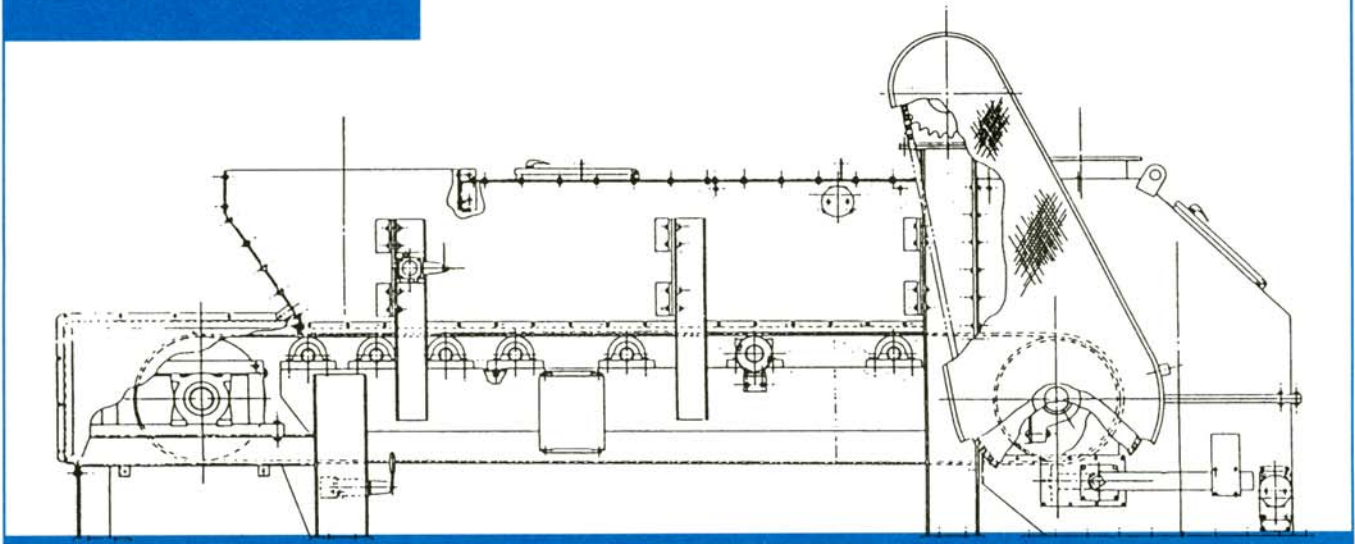
Meant for relatively high-tonnage, short-distance conveying applications, the feeders have a complete structural steel frame entirely independent of outside support. Continuous chute work encloses the material stream with gasketing, rubber seals, and closure plates. Dust collection fittings may be added at either the head or tail end. Self-aligning bearings for pulleys and idlers are mounted outside the material stream for long life and easy accessibility. Impact-absorbing idler rolls are used throughout.

External screw-type take-ups are furnished for accurate belt tension and tracking adjustment. Drive units may be selected from a variety of styles depending on capacity, speed, and customer preference. Coupling-connected, chain-connected, or shaft-mounted units are all possible. Established types of conveyor hardware are utilized to facilitate spares ordering and reliability.

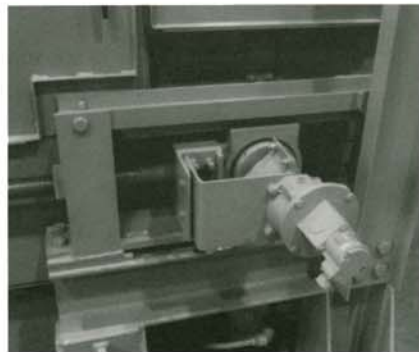
Each potential application will be reviewed on a special basis. Layout, design, and equipment selection will be done for each situation as required. Conveyor widths, lengths, and ratings are available up to 96-inch belt sizes and capacities of 3000 tph of coal. Materials, such as

Stock Quality, Stock Reliability

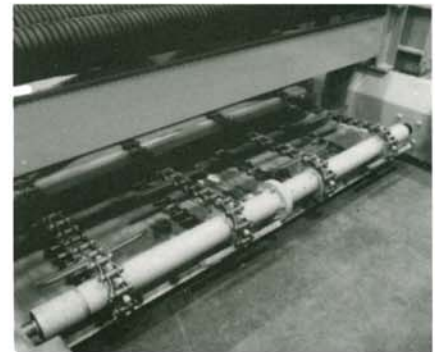
Heavy Belt Feeder Typical Assembly Drawing



Impact Absorbing Idler Rollers



External Screw-type Take-up



Clean-out Conveyor Assembly

coal, iron ore, limestone, and rock, may be handled at higher rates.

Also offered is the option for material weighing. A self-contained weigh roll arrangement can be furnished, integral with the feeder frame, to allow consistent weighing accuracy without errors caused by misalignment or structural distortion. The weight signal may be used for process control, train loading, or plant supply.

Even without weighing, variable speed units can control or be controlled by a process or delivery feed route. Complete electrical and electronic interlocking is furnished, with control interfaces possible with a wide variety of equipment.

The cover photograph shows a 72-inch, 1600 tph unit for Iowa Public Service in our assembly area. It is representative of the type of feeder now available from Stock for vibrating pan feeder replacement, conveyor replacement, or hopper and bunker batch weighing and delivery systems. Other feeders are now in place at Texas Utilities (TU Electric) and Public Service of Oklahoma.

For additional information about Stock Equipment Company or its products, please contact:

STOCK

STOCK EQUIPMENT COMPANY

16490 Chillicothe Road
Chagrin Falls, Ohio 44023-4398
Ph: (440) 543-6000, (800) 289-7326
Fax: (440) 543-5944
E-mail: stock.sales@stockequipment.com

